

Microsoft  
Azure  
Certified




# Routers for Industrial Solutions



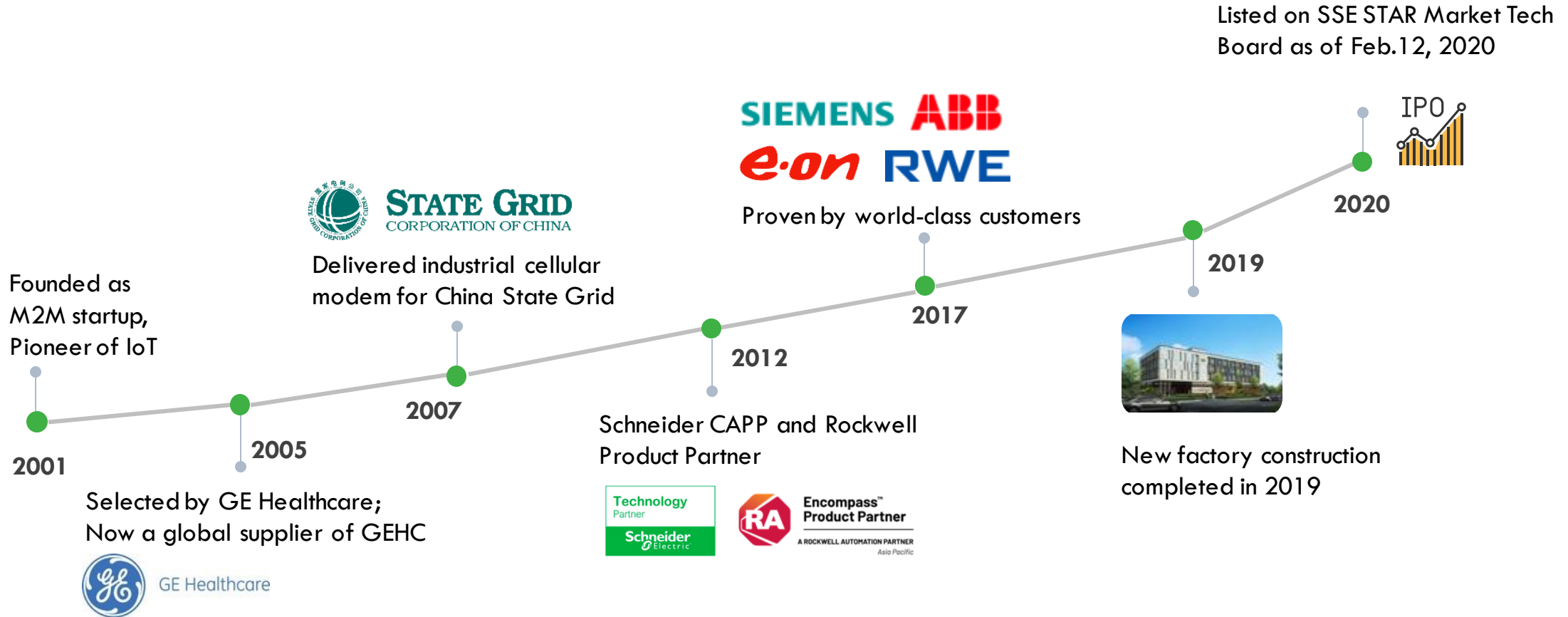
# Tony Lee

Sales Director

 : 512-296-5149

 : [tony.lee@inhandnetworks.com](mailto:tony.lee@inhandnetworks.com)

# Pioneering IoT for 19 Years



\*STAR Market is a Nasdaq-style tech board — the Science and Technology Innovation Board at Shanghai Stock Exchange.

# | Quality Commitment & Support



**High Quality with  
ISO 9001:2015, RoHS  
and CE certifications**



**3-year  
Warranty**



**Free Technical Support  
16Hrs per Day  
5 Days per Week**

InRouter600

# Low-cost Industrial LTE Router



InRouter611-S/615-S



LTE CAT 4/1, CAT M1  
ETH, Wi-Fi



High  
Security & Reliability



Rugged  
Design



Easy  
Remote Mgmt.



## Easy & Cost-effective LTE Migration



InRouter600

## Low-hanging fruit opportunity!



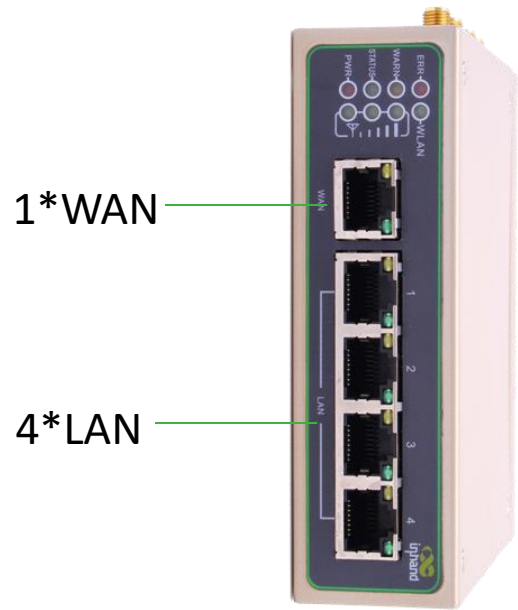
InRouter611-S/615-S

There are approximately 80 million 3G devices still active in North America

- January 1, 2021 the carriers will cease supporting the network.
- Towers will begin to come down with no announcements or warning
- Many of these devices are in controllers.
- InHand is launching new special pricing with Reynolds to help grab this business.



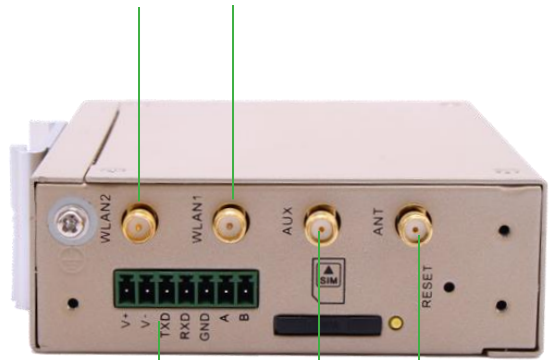
# Industrial Rugged Design & Multiple Interfaces



1\*WAN

4\*LAN

2\*Wi-Fi Antenna Connector



1\*RS232/485 Dual Mode,  
industrial terminal block

2\*4G/3G  
Antenna Connector

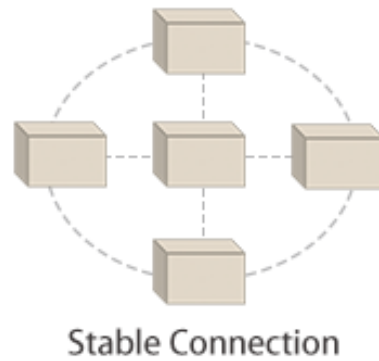
- 5\*ETH port, 1\*Serial Port
- Metal enclosure, IP30 protection, EMC level 3
- Wide operating temperature: -20°C~+70°C
- Wide voltage input: DC9~26V
- Standard DIN-Rail mounting, with optional hanger mounting and wall mounting
- **CLASS 1 DIVISION 2 CERTIFIED!**

# Stable and Reliable Connection

IR615-S



- Multi-layer Link Detection
- Auto-recovery
- Link Backup



- Support 3G & 4G LTE, Wi-Fi, Ethernet
- Multiple link backup mechanisms to maintain continuous network connection
- Hardware watchdog to auto recover from device faults
- Multi-layer link detection mechanism to auto recover from link faults

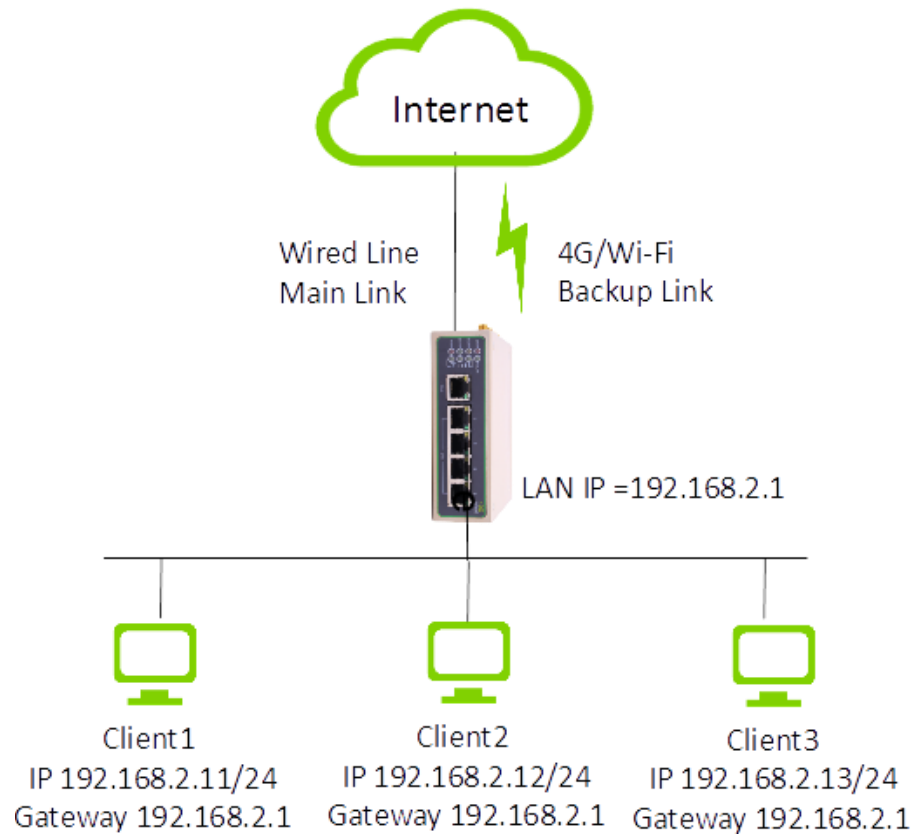


# Easy to Deploy and Manage



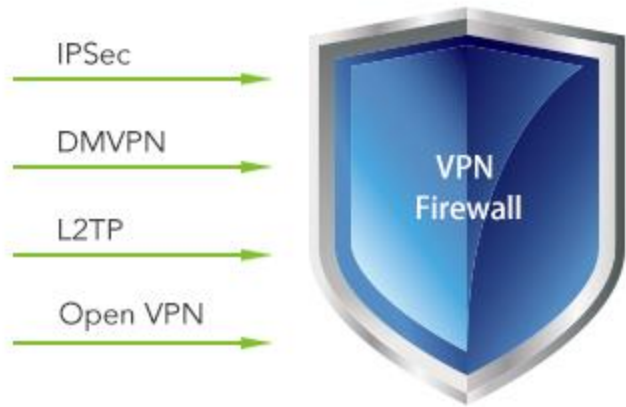
- Supports APN auto-negotiation, requiring no user configuration on simple public network connections
- CLI and user-friendly Web configuration
- Support InHand Device Manager Cloud for batch config. and efficient central network management
- Support InHand Device Touch Cloud, allowing engineers to conduct remote diagnostics, debugging and programming

# Link Backup



- Backup between wired and 4G/Wi-Fi links to maintain always-on connection
- High reliability ensures uptime

# VPN and Data Security



- Data Transmission Security: support IPsec VPN, L2TP, PPTP, GRE, OpenVPN and CA
- Firewall Protections: DoS protection, Stateless Packet Inspection, Filtering Multicast/Ping package, Virtual IP Mapping, Access Control List (ACL), IP/MAC Binding, Port forwarding
- Multi-level user authorization for access security

InRouter900

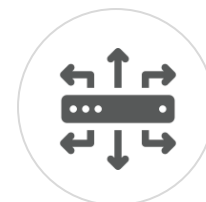
# High-end Industrial LTE Router



Highest Industrial Grade



LTE, ETH, Wi-Fi



Dynamic Routing with RIP or OSPF

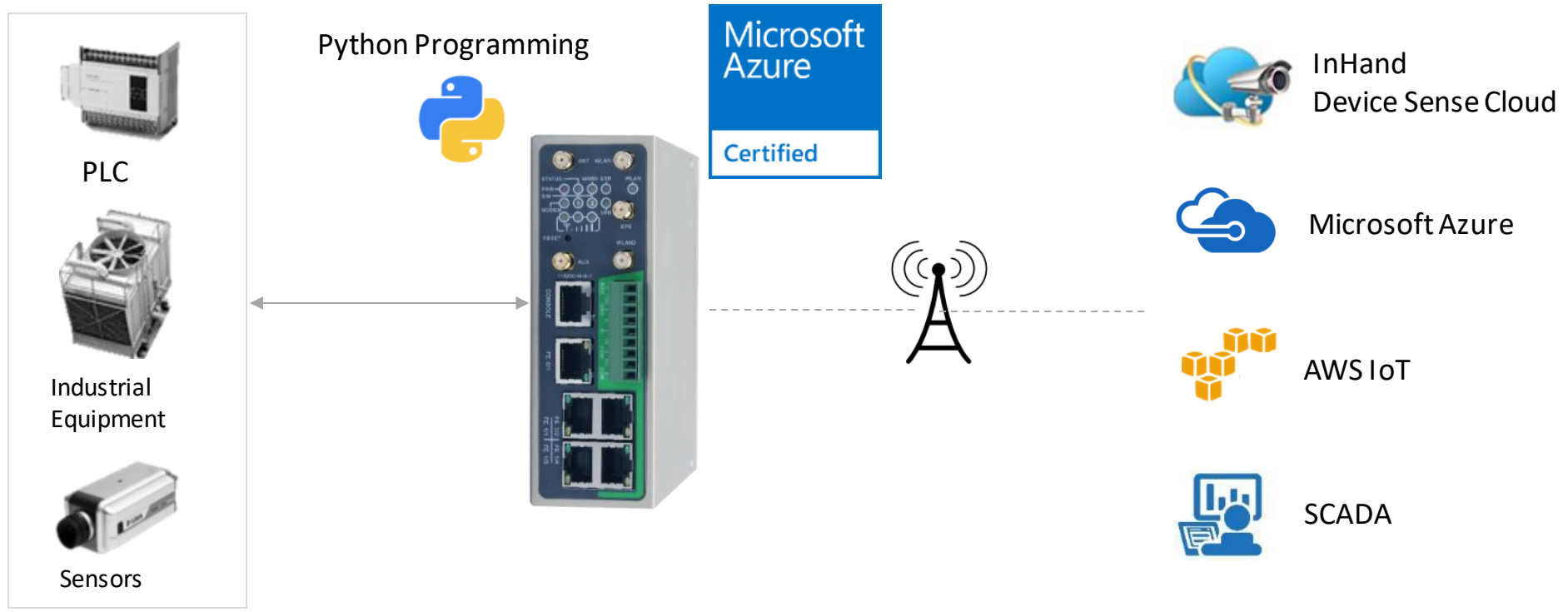


Data Security

## InRouter912/915



# Microsoft Azure IoT Certified



# Industrial Design

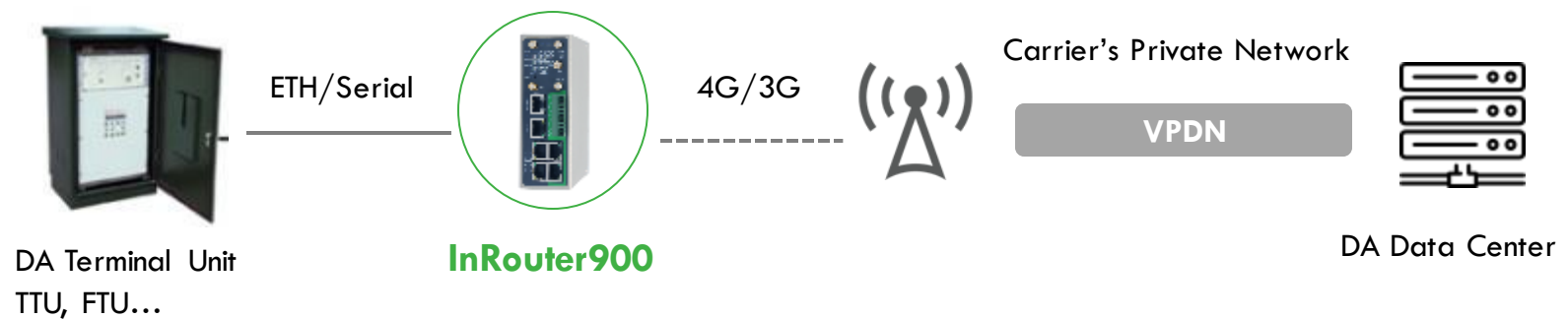


- Metal housing, IP30
- EMC level 4/3
- Wide temp range -25 ~ 70°C
- Wide voltage input DC 12-48V
- DIN-Rail mounting

## Application:

# Cellular Communication for Distribution Automation

- InRouter900 connects DA equipment to the data center
- Secure data transmission via VPN tunnel
- Rugged design, easy to embed in the terminal unit
- Wide temp range -25 ~ 70 °C, wide voltage input DC 12-48V
- Support IEC 101 to 104
- Easy customization via Python programming



# InConnect Application

